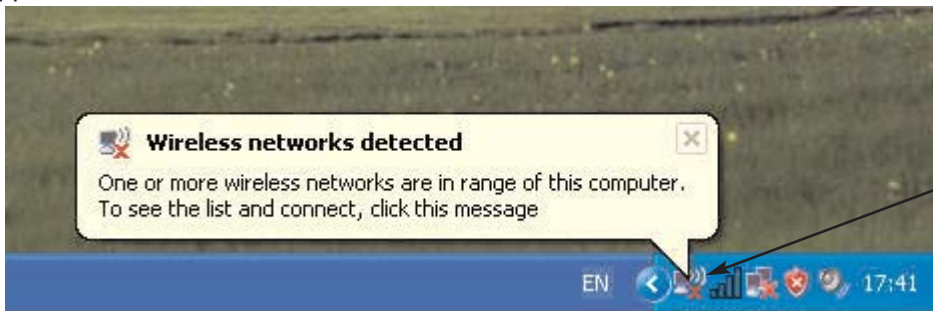
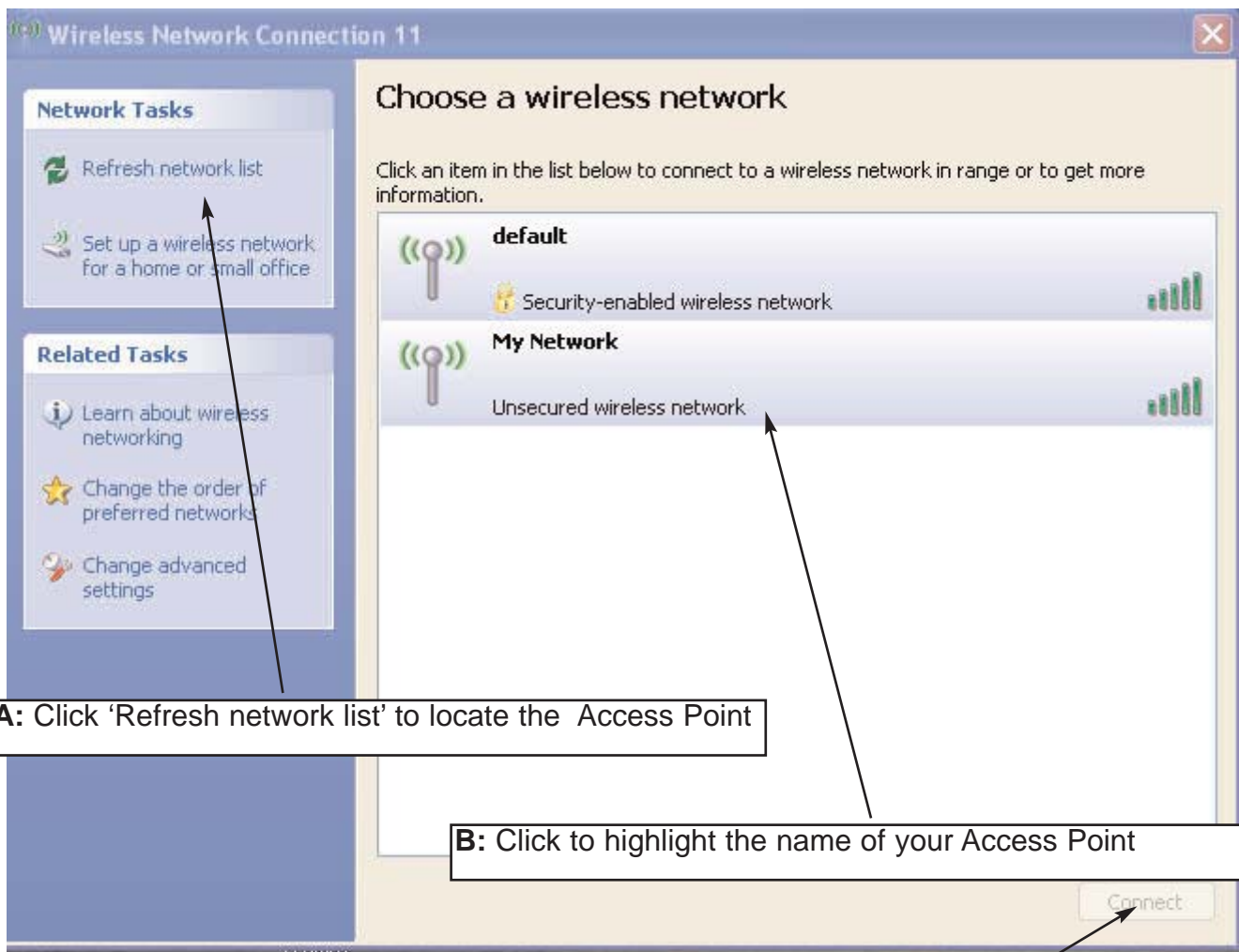


Procedure for Wireless client side setup

To connect your Windows XP SP 2 Client to the Access Point without enabling the encryption. Please note that the following instruction briefly details how to use Windows XP wireless networking only. If you are using another Wireless networking connection management software product please refer to the relevant software vendor for support.



Click here to choose a wireless network

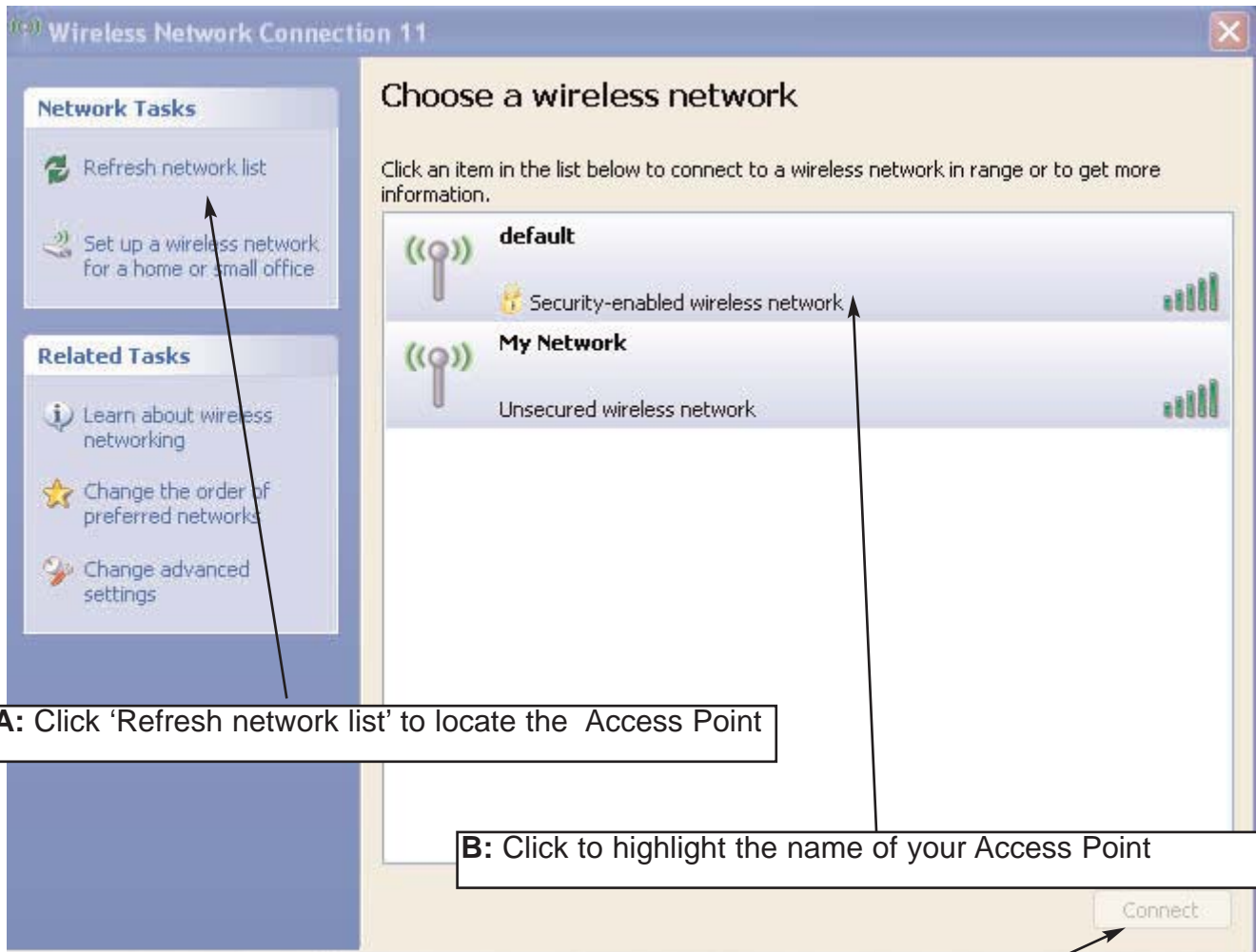


A: Click 'Refresh network list' to locate the Access Point

B: Click to highlight the name of your Access Point

C: Click the 'Connect' button to connect to your Access Point

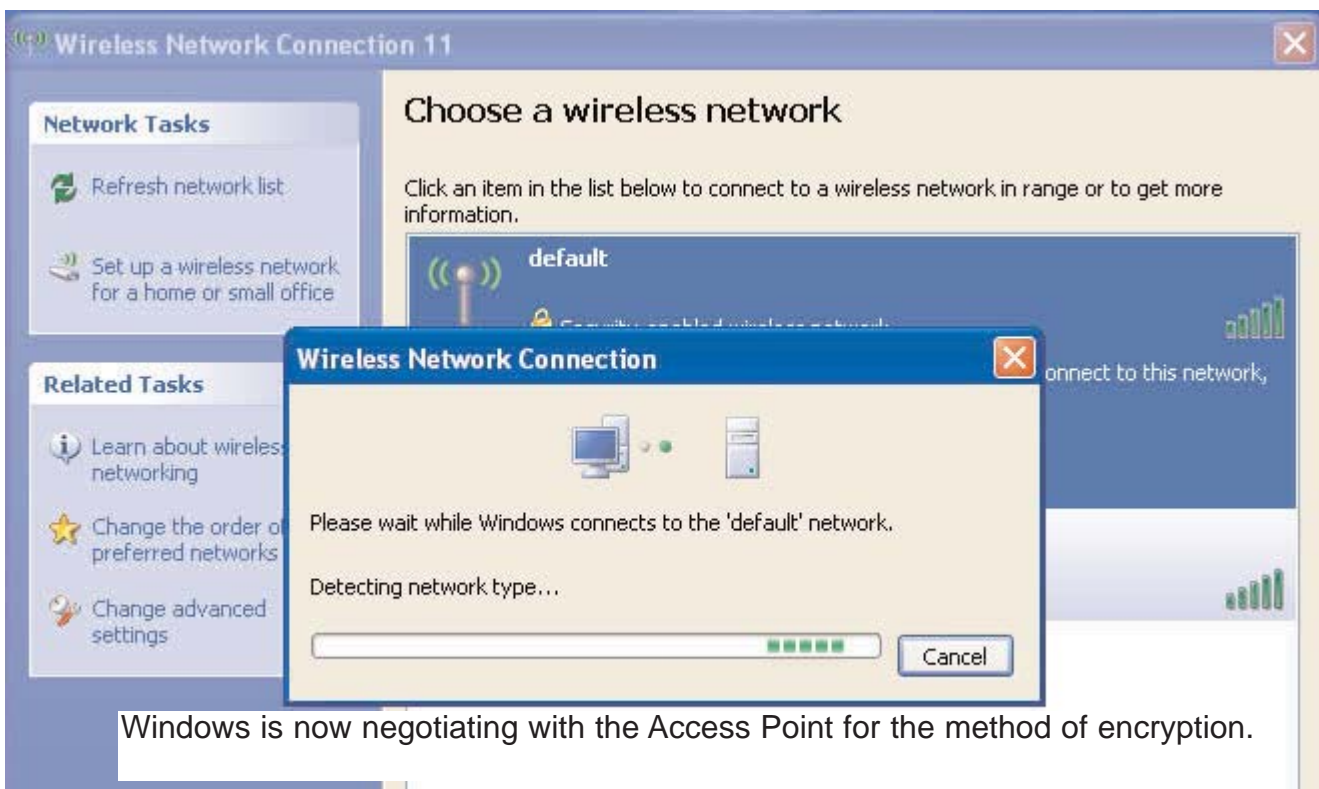
To connect to a WEP encryption enabled Access Point.



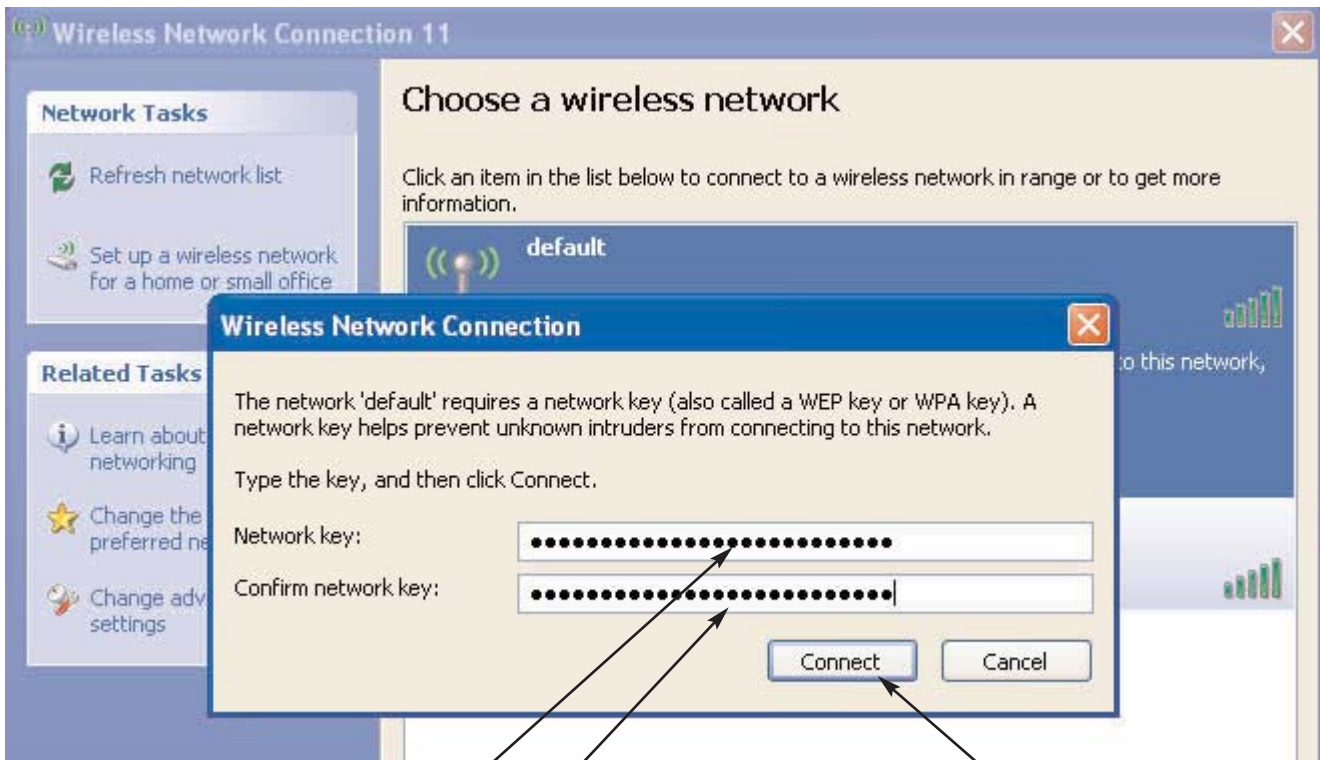
A: Click 'Refresh network list' to locate the Access Point

B: Click to highlight the name of your Access Point

C: Click the 'Connect' button to connect to your Access Point

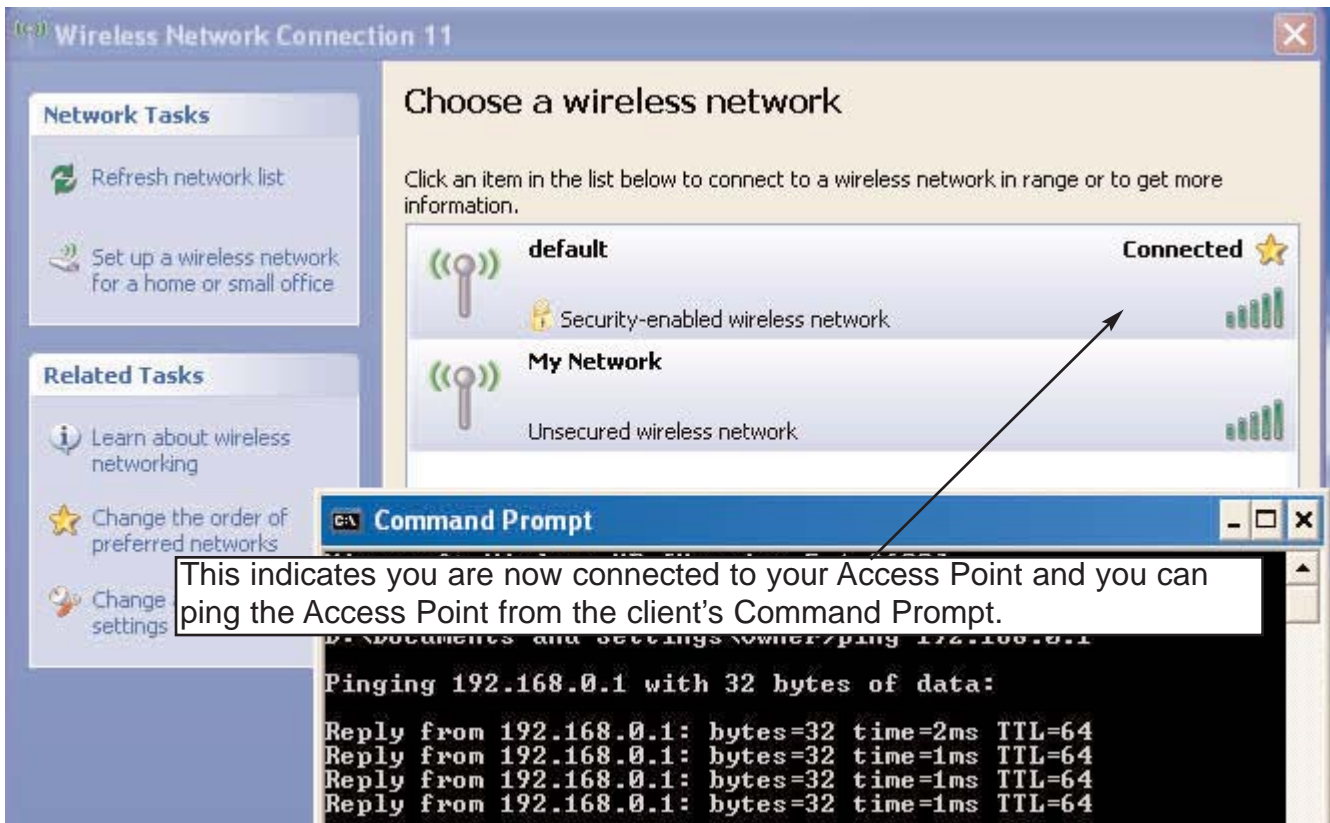


Windows is now negotiating with the Access Point for the method of encryption.



D: Enter the WEP key you set in the Access Point (XG-2180) and then confirm the key.

E: Click 'Connect' button.



This indicates you are now connected to your Access Point and you can ping the Access Point from the client's Command Prompt.

If you use another operating system please refer to the relevant manual and technical support. You may be required to install a utility to create a wireless connection to the Access Point.