

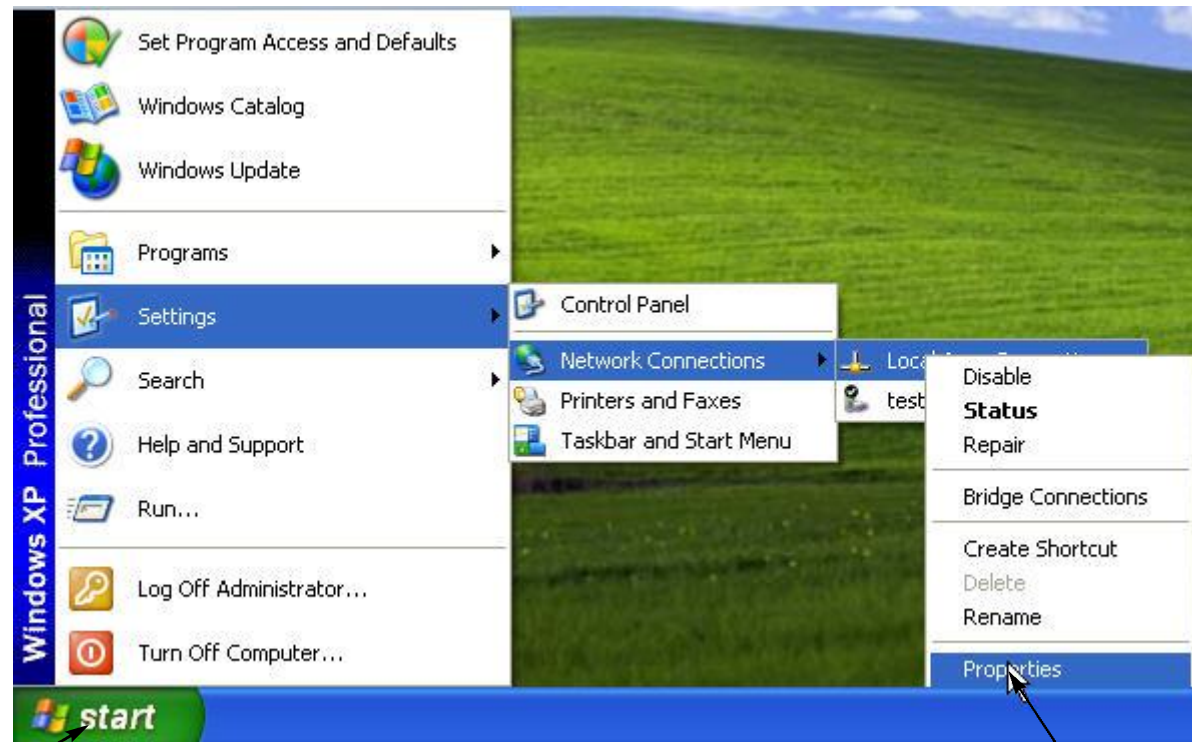
Port Forwarding PTi-845x

(A router or broadband router can also be known as a NAT-router, Internet gateway, broadband sharing device or home firewall, but the main purpose of the device is the same: to allow users on a small network to share a single connection to the Internet.)

IN A SMALL NETWORK WITH A BROADBAND ROUTER

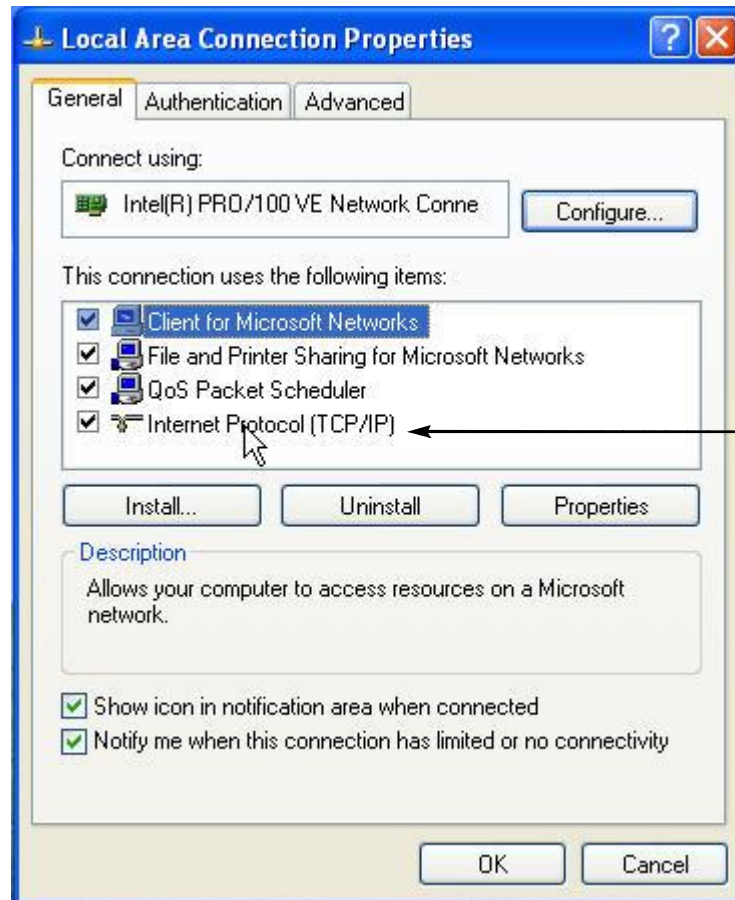
To set up the port forwarding you required to set a static (fixed) IP address to your PC is recommended. For example, if your broadband router is set for the 192.168.1.1(default) network, the PC's IP address could be 192.168.1.10 or any one IP address in the range that is not in use.

Assign a manual IP address to a PC.

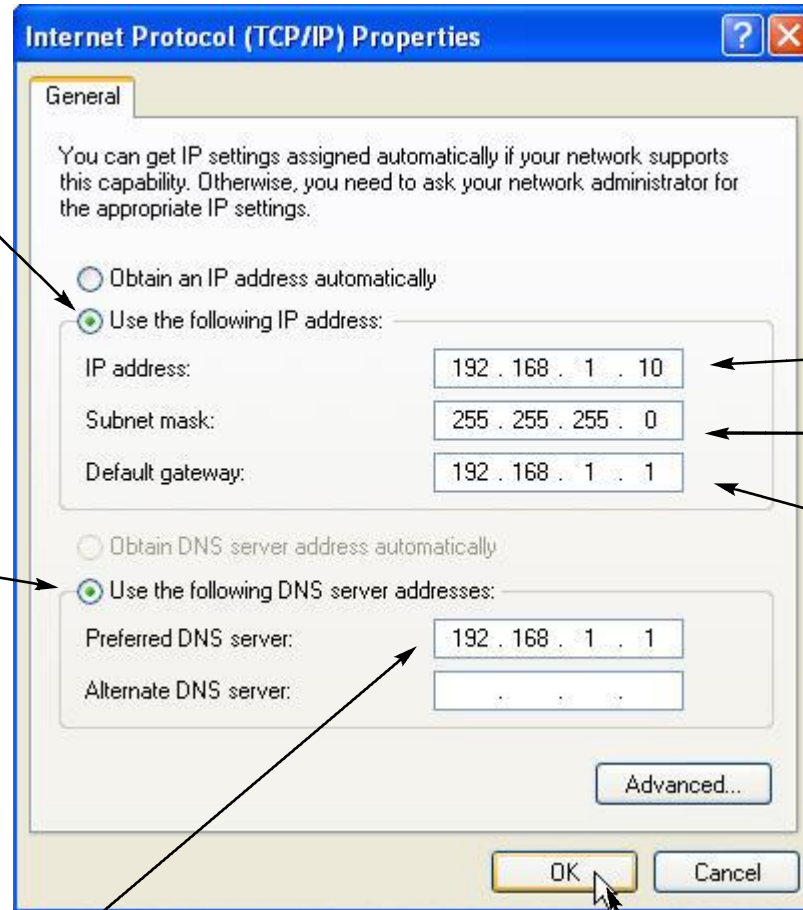


1. Click on 'Start'.

2. Click on the 'Properties' box.



3. Double click on the 'Internet Protocol'.



4. Click on 'Use the following addresses automatically' button.

5. Enter the IP address, this will become the IP of this PC.

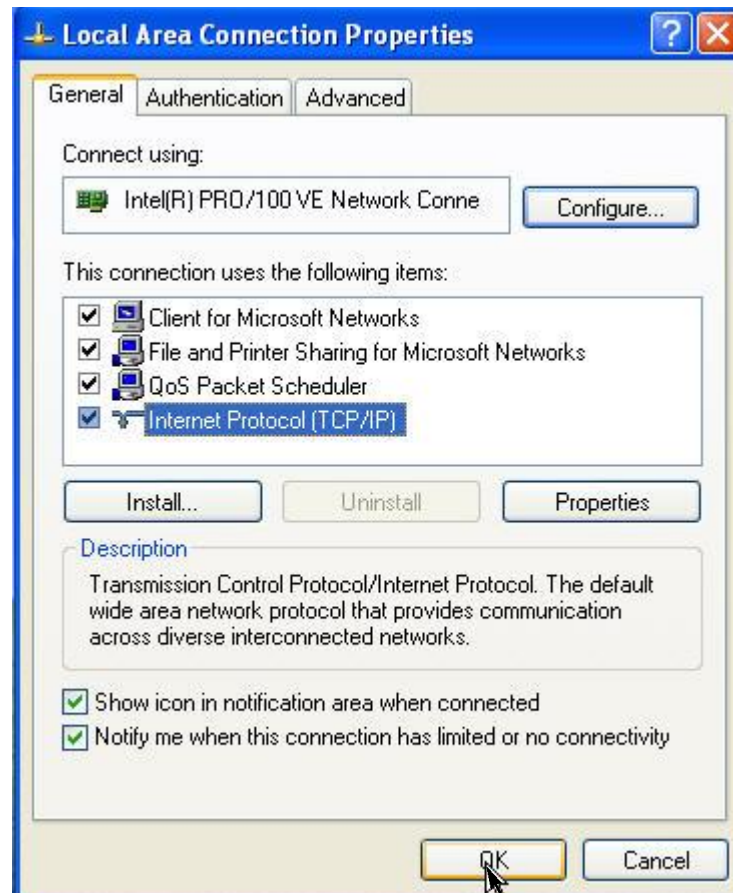
6. Enter the subnet mask here.

7. Enter the 'Default gateway' usually this is address of your Router.

8. Click on 'Use the following DNS server addresses.'

9. Enter the DNS here. The DNS server addresses can be obtain from your ISP. In this case we enter the Gateway's IP address.

10. Click on the 'OK' button.



11. Click on the 'OK' button to complete the process.

Setting Up the PTi-845x via the web interface

12. Click on 'Advanced'.

12. Click on 'Lan Clients'.

13. Enter the host PC/device's IP address here.

14. Click on the 'Apply' button.

HOME EZ SETUP CONFIG **ADVANCED** WIRELESS TOOLS STATUS HELP

UPnP
SNTP
SNMP
IP QoS
Port Forwarding
IP Filters
LAN Clients
LAN Isolation
Bridge Filters
Web Filters
Multicast
Static Routing
Dynamic Routing
Access Control
Save All

LAN Clients

To add a LAN Client, Enter IP Address and Hostname, then click Apply.

Select LAN Connection: LAN group 1

Enter IP Address: 192.168.1.10

Hostname:

MAC Address:

Dynamic Addresses

Reserve	IP Address	Hostname	MAC	Type
<input type="checkbox"/>	192.168.1.2	techi	00:0c:6e:41:5b:c1	Dynamic

Apply Cancel

HOME | EZ SETUP | CONFIG | **ADVANCED** | WIRELESS | TOOLS | STATUS | HELP

LAN Clients

To add a LAN Client, Enter IP Address and Hostname, then click Apply.

Select LAN Connection: LAN group 1 ▾

Enter IP Address:

Hostname:

MAC Address:

Static Addresses

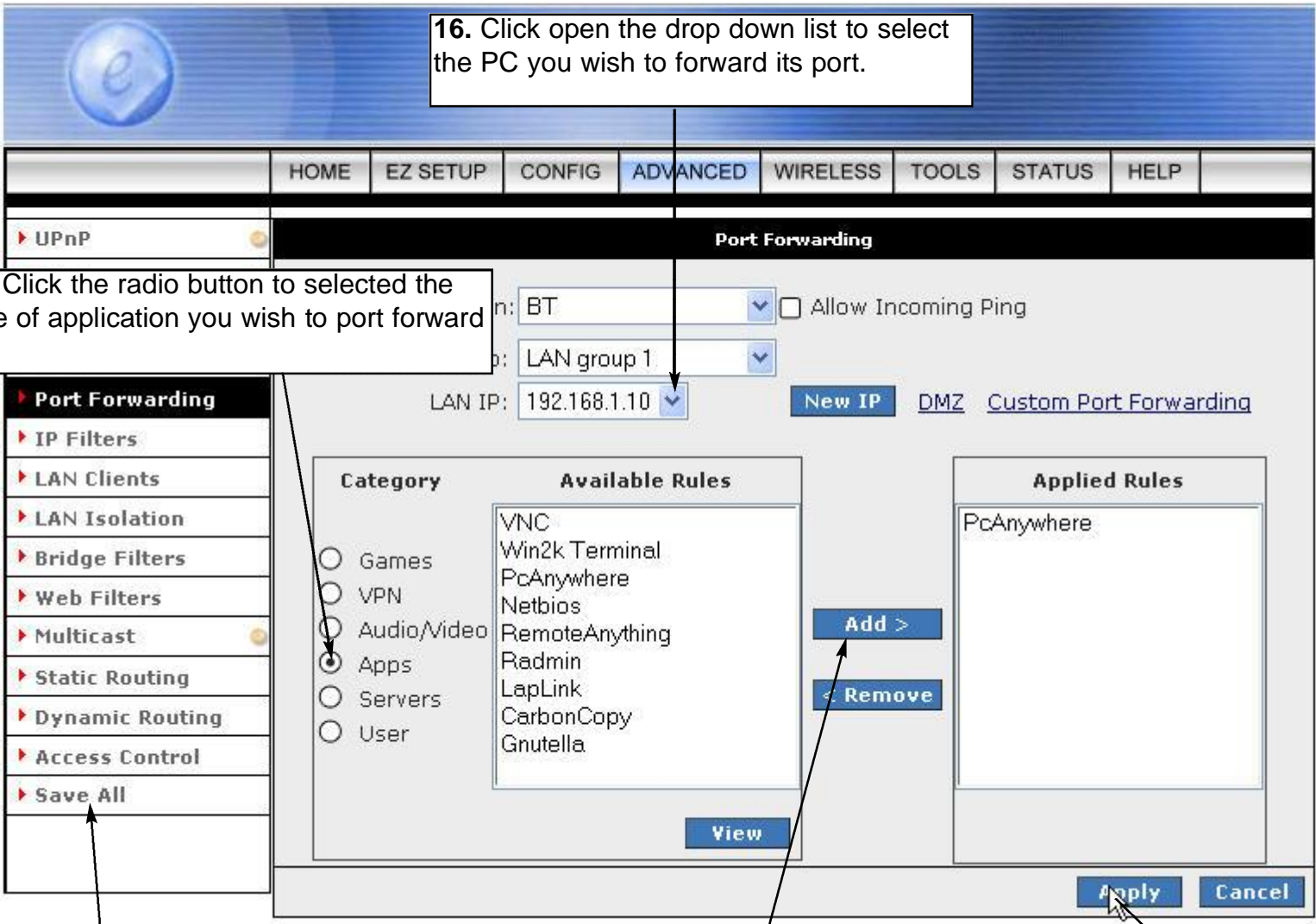
Delete	IP Address	Hostname	MAC	Type
<input type="checkbox"/>	192.168.1.10			Static

Dynamic Addresses

Reserve	IP Address	Hostname	MAC	Type
<input type="checkbox"/>	192.168.1.2	techi	00:0c:6e:41:5b:c1	Dynamic

Apply **Cancel**

15. Click on 'Port Forwarding'.



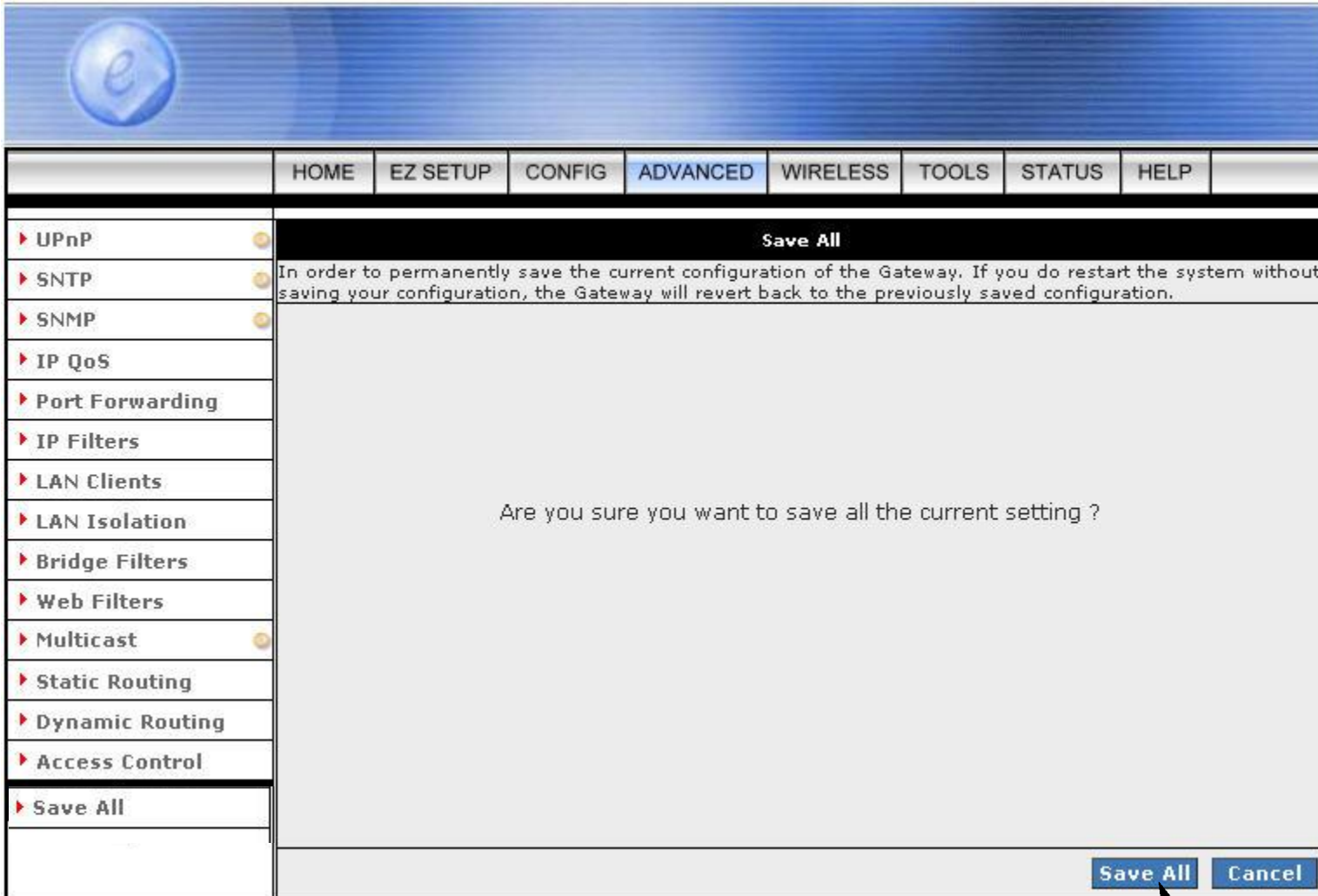
16. Click open the drop down list to select the PC you wish to forward its port.

17. Click the radio button to selected the type of application you wish to port forward

18. Highlight the application the click 'Add'.

19. Click on the 'Apply' button.

20. Click on 'Save All'.



21. Click on 'Save All' to finish.

The image shows a web-based configuration interface for a router. At the top left is a blue circular logo with a white 'e'. Below it is a navigation menu with tabs: HOME, EZ SETUP, CONFIG, **ADVANCED**, WIRELESS, TOOLS, STATUS, and HELP. The 'ADVANCED' tab is selected. On the left side, there is a vertical list of configuration options, each with a red arrow icon and a yellow circle icon: UPnP, SNTP, SNMP, IP QoS, Port Forwarding, IP Filters, LAN Clients, LAN Isolation, Bridge Filters, Web Filters, Multicast, Static Routing, Dynamic Routing, Access Control, and Save All. The main content area is titled 'Save Setting' and contains the text: 'Your settings are being saved and the device being rebooted. Save and reboot in progress, please wait...'. Below this text is a progress bar showing 'Saving (69%)' with a blue bar extending to approximately 69% of the total width.

Please wait until the timing bar is 100% finish then the process is completed.